

A G E N D A

- Look at clips from The King's Speech
- Shot size quiz (stills)
- Critique some portraits
 - Small Group
 - Big Group

THE KING'S SPEECH

THE KING'S SPEECH

Clip 1

THE KING'S SPEECH

Clip 2

SHOT SIZES















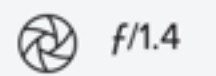


NORMAL, WIDE, TELEPHOTO?





Fujifilm X-T1
XF16mmF1.4 R
WR



f/1.4



16.0 mm



1/30



800



Flash (off,
did not fire)



[Show EXIF](#)







Nikon Df
28.0-300.0 mm
f/3.5-5.6



f/22.0



28.0 mm



4



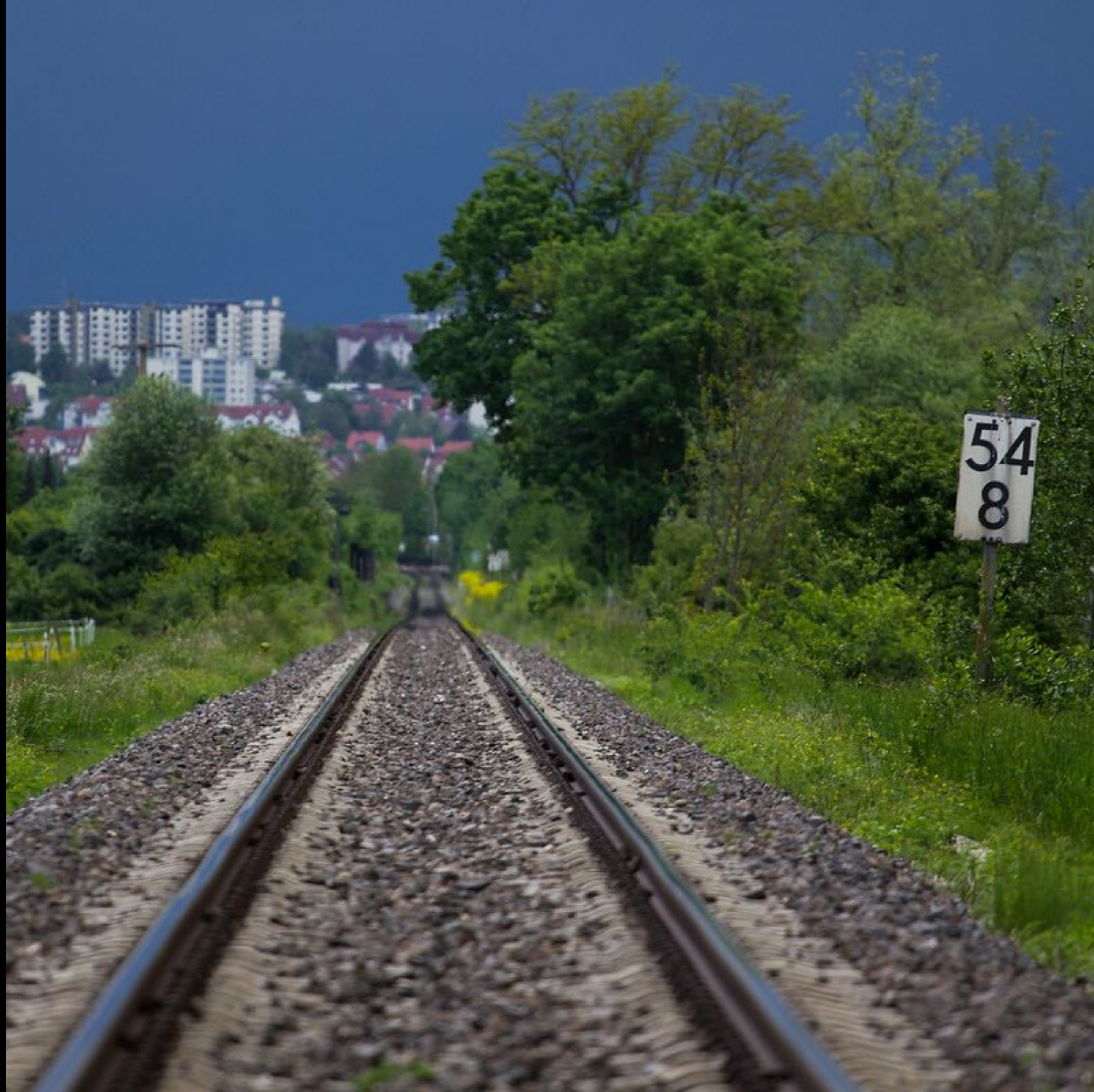
100

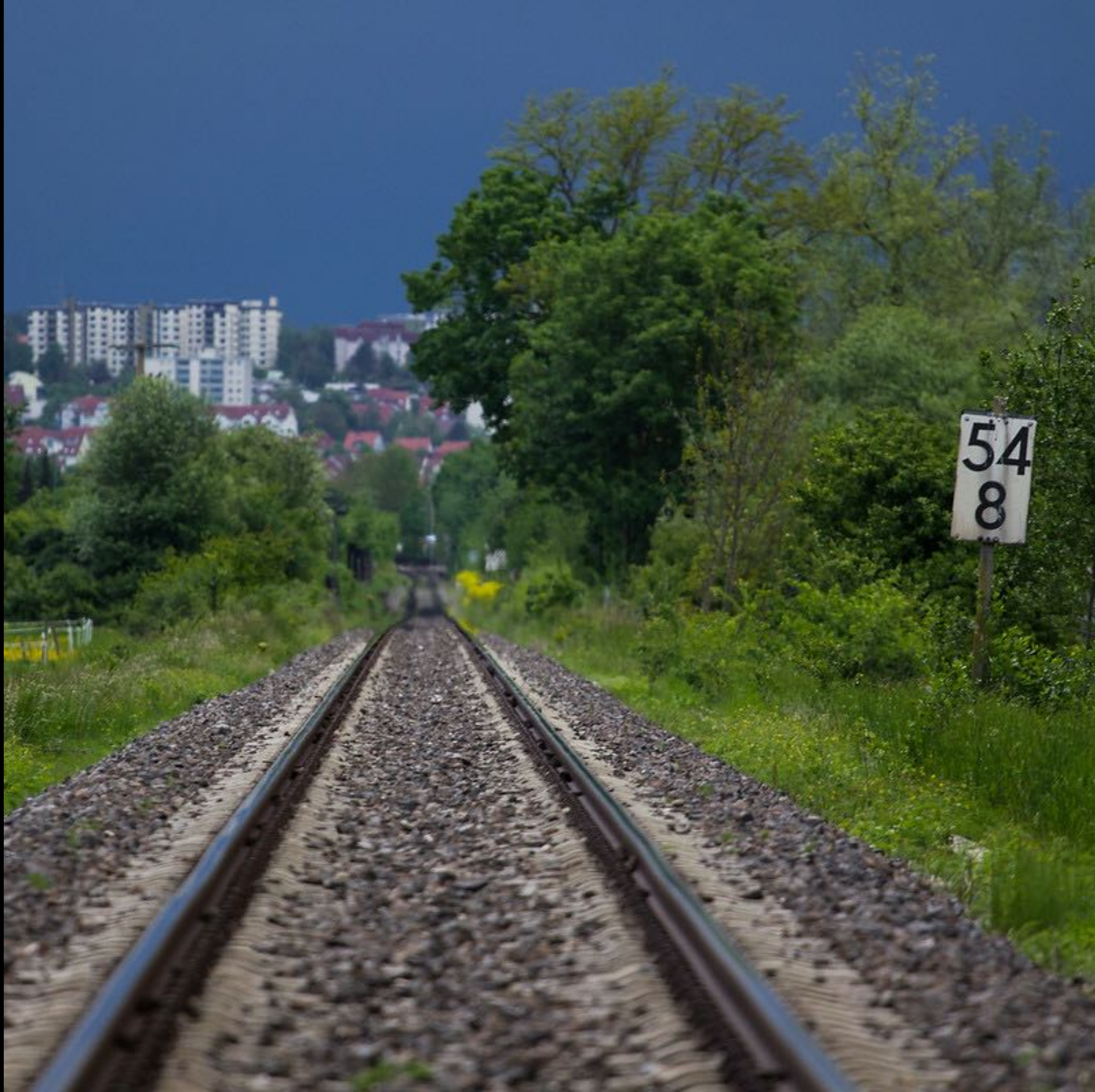


Flash (off,
did not fire)



Show EXIF





Canon EOS 60D
EF70-200mm
f/4L USM



f/4.0



200.0 mm



1/400



200



Flash (off,
did not fire)



[Show EXIF](#)






Nikon D3

 f/5.0

 175.0 mm

 400

 [Show EXIF](#)





Canon EOS 7D
Canon EF
300mm f/4L IS



f/7.1



300.0 mm



1/250



400



Flash (off,
did not fire)



Show EXIF





Canon EOS 7D
Mark II
10-20mm



f/3.5



10.0 mm



1/800



100



Flash (off,
did not fire)



Show EXIF

SMALL GROUPS

TODO

- Critique your photo:
 - Description, Formal Analysis, Interpretation, Evaluation
- What elements are used in the composition?
- Wide, normal, or telephoto?
 - Was the lens choice effective?
- What is the relationship of the subject to their environment?
- What is our relationship as the viewer?
- What is successful about this portrait, what suggestions would you give the artist?





Thailand	Bangkok
portrait	film 35 film
Nikon F2	tudorcolor
tudorcolor xlx200	





Nikon D3100



f/6.3



18.0 mm



1/160



3200



Flash (off,
did not fire)



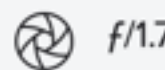
Show EXIF





Leica Camera AG
M9

Leica Noctilux-M
50mm f/1



f/1.7



50.0 mm



1/2000



80



Flash (off,
did not fire)



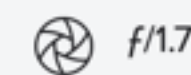
Hide EXIF

P O R T R A I T S





Pentax K-50
A Series Lens



f/1.7



50.0 mm



1/30



1600



Flash (off,
did not fire)



Show EXIF





Nikon D3
28.0-70.0 mm
f/2.8



f/8.0



65.0 mm



1/1250



1600



Flash (off,
did not fire)



Show EXIF





Nikon D700
80.0-200.0 mm
f/2.8



f/7.1



155.0 mm



1/125



800



Flash (off,
did not fire)



[Show EXIF](#)





Nikon D3
28.0-70.0 mm
f/2.8



f/7.1



70.0 mm



1/200



1600



Flash (off,
did not fire)



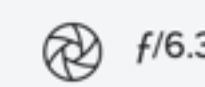
Show EXIF



Saburo Hokke



Nikon D700
80.0-200.0 mm
f/2.8



f/6.3



92.0 mm



1/100



800



Flash (off,
did not fire)



Show EXIF



©cshamilton



Nikon D750



$f/5.6$



50.0 mm



1/160



ISO 500



Agi Rygula
PHOTOGRAPHY



Sony ILCE-7M2
DT 50mm F1.4
SAM



f/3.2



50.0 mm



1/640



800



Flash (off,
did not fire)



Show EXIF

